

**Reticle  
Catalogue**



Thermal Imaging Riflescopes

**THERMION XG**

## Non-scalable reticles

The values of the non-scalable reticles are correct in the following cases:

- when the magnification of the scope is set to minimum
- when "picture in picture" is activated

[www.tulon.ru](http://www.tulon.ru)

## Scalable reticles

Reticle parameters apply to all magnifications

**D50i**

**C50i**

**X54i**

**H50i**

**X50i**

**T54i**

**M58i**

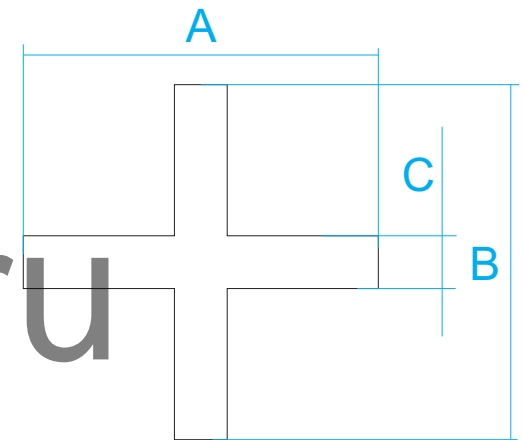
**X51Fi-300**

**M56Fi (Mil-Dot)**

**M57Fi (Mil-Dot)**

# D50i

Reticle parameters (for minimum magnification)

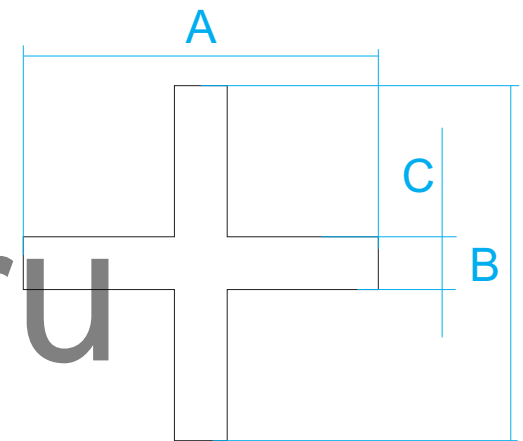


Thermal Imaging Riflescopes  
**THERMION XG**

Model	MOA	cm @ 100 m
<b>XG50</b>		
<b>Section A</b>	3.6	10.5
<b>Section B</b>	3.6	10.5
<b>Section C</b>	0.5	1.5

# C50i

Reticle parameters (for minimum magnification)

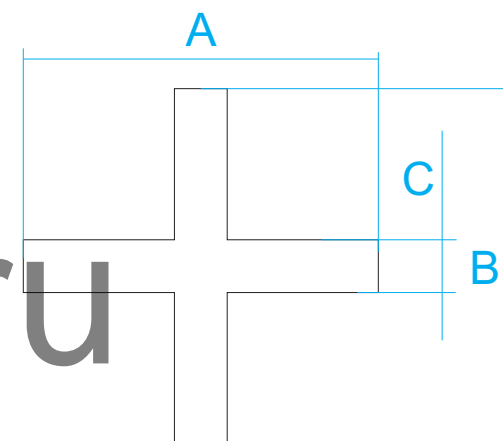


Thermal Imaging Riflescopes  
**THERMION XG**

Model	MOA	cm @ 100 m
	XG50	XG50
Section A	3.6	10.5
Section B	3.6	10.5
Section C	0.5	1.5
Section D	68.8	200

# X54i

Reticle parameters (for minimum magnification)



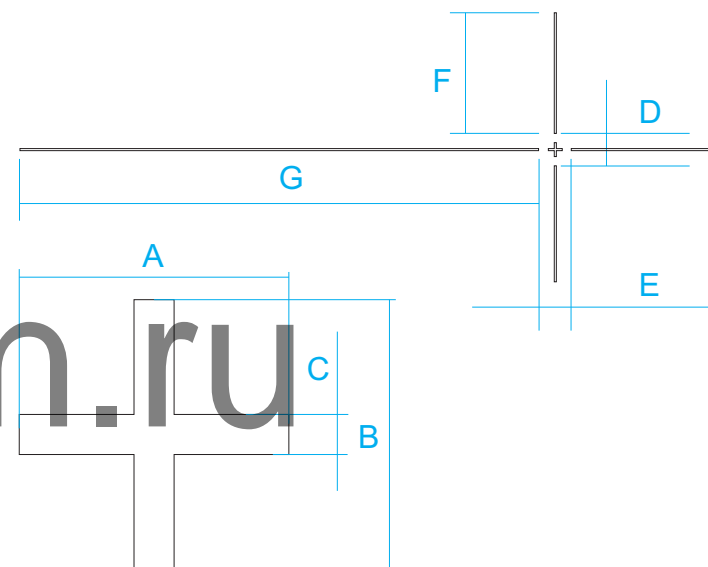
Thermal Imaging Riflescopes  
**THERMION XG**

Model	MOA	cm @ 100 m
	XG50	XG50
Section A	3.6	10.5
Section B	3.6	10.5
Section C	0.5	1.5
Section D	68.8	200

# H50i



Reticle parameters (for minimum magnification)



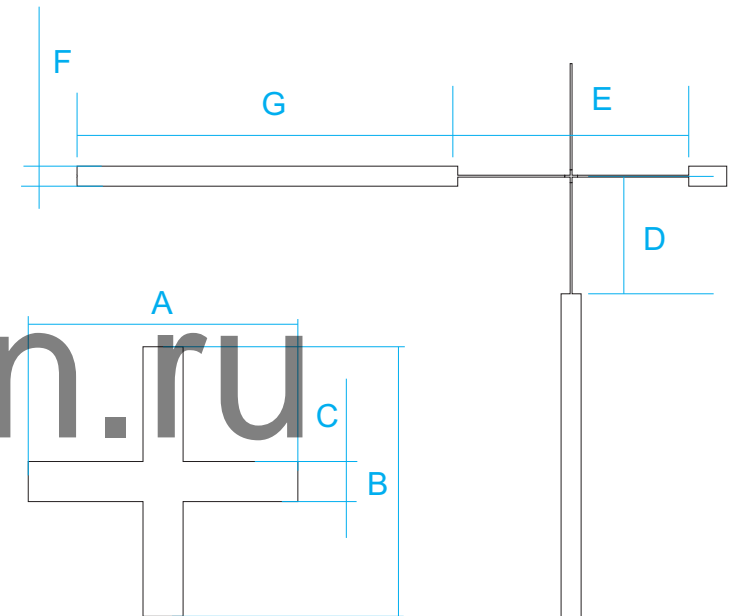
Thermal Imaging Riflescopes  
**THERMION XG**

Model	MOA	cm @ 100 m
<b>XG50</b>		<b>XG50</b>
Section A	3.6	10.5
Section B	3.6	10.5
Section C	0.5	1.5
Section D	19.9	58
Section E	19.9	58
Section F	42	122
Section G	152	443

# X50i



Reticle parameters (for minimum magnification)

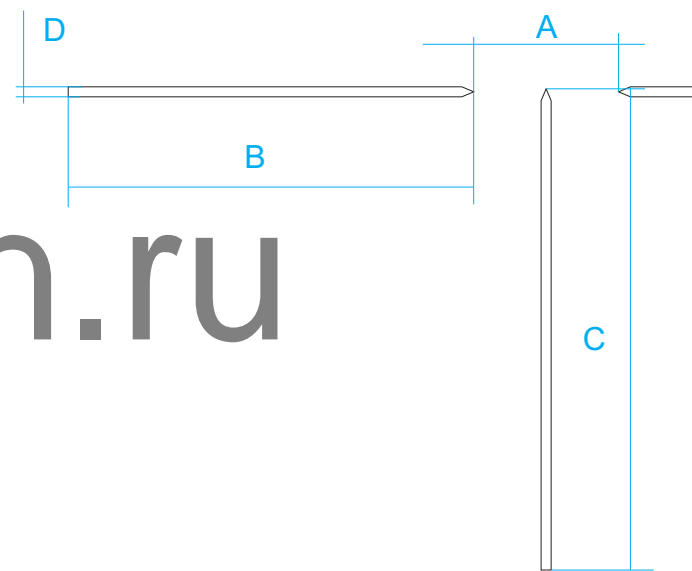


Thermal Imaging Riflescopes  
**THERMION XG**

Model	MOA	cm @ 100 m
<b>XG50</b>		<b>XG50</b>
Section A	3.6	10.5
Section B	3.6	10.5
Section C	0.5	1.5
Section D	34.4	100
Section E	68.8	200
Section F	1.5	4.4
Section G	128	372

# T54i

Reticle parameters (for minimum magnification)



Thermal Imaging Riflescopes  
**THERMION XG**

Model	MOA	cm @ 100 m
<b>XG50</b>		<b>XG50</b>
Section A	68.8	200
Section B	128	372
Section C	164	477
Section D	3.6	10.5

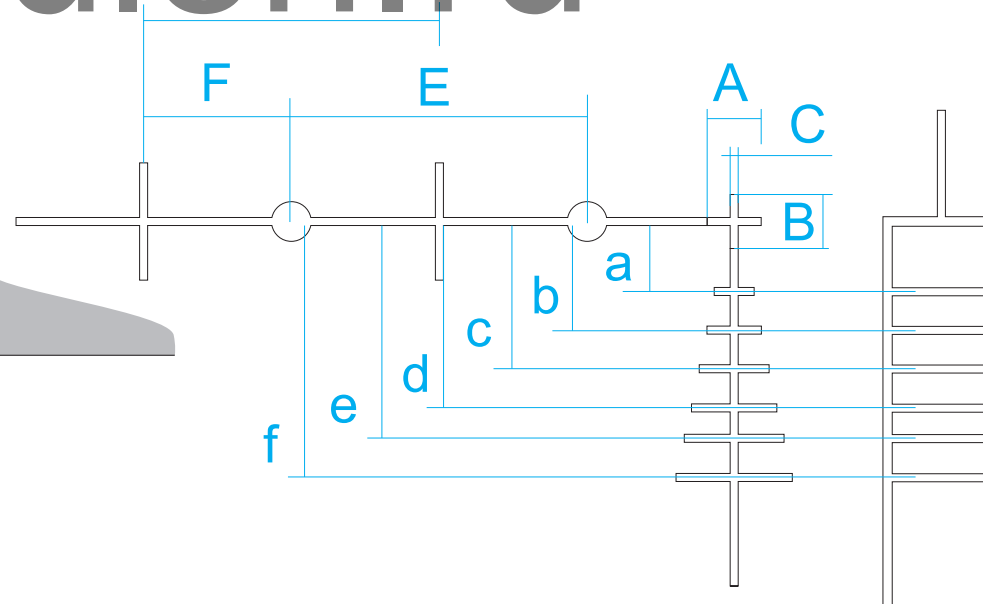


# M58i



	MOA	cm @ 100 m
<b>Section A</b>	3.6	10.5 on minimal magnification
<b>Section B</b>	3.6	10.5 on minimal magnification
<b>Section C</b>	0.5	1.5 on minimal magnification
<b>Section D</b>	3.5	10 (1 mil) on 24x magnification
<b>Section E</b>	3.5	10 (1 mil) on 24x magnification
<b>Section F</b>	3.5	10 (1 mil) on 12x magnification

<b>Section a</b>	1 mil (10 cm @ 100 m) on 3x magnification
<b>Section b</b>	1 mil (10 cm @ 100 m) on 6x magnification
<b>Section c</b>	1 mil (10 cm @ 100 m) on 12x magnification
<b>Section d</b>	1 mil (10 cm @ 100 m) on 18x magnification
<b>Section e</b>	1 mil (10 cm @ 100 m) on 24x magnification
<b>Section f</b>	-

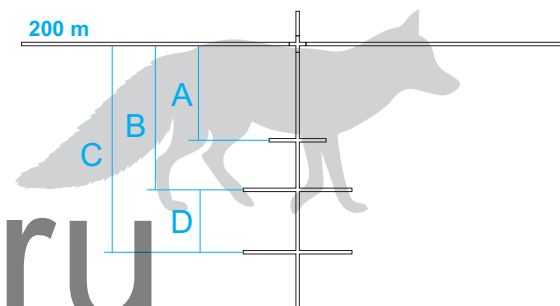


Thermal Imaging Riflescopes  
**THERMION XG**

**SCALABLE**

# X51Fi-300

Reticle parameters (apply to all magnifications)



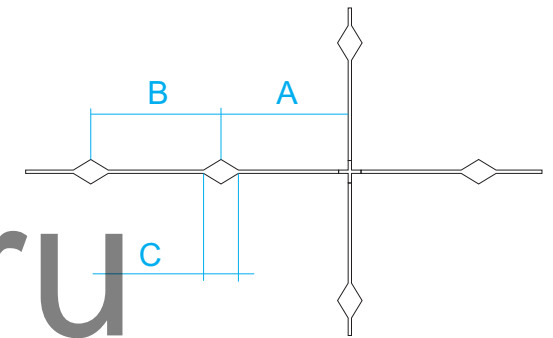
	200 m	300 m
<b>Section A</b>	15 cm (fox body)	23 cm (roe deer body)
<b>Section B</b>	23 cm (roe deer body)	35 cm (wild boar body)
<b>Section C</b>	35 cm (wild boar body)	50 cm (deer body)
<b>Section D</b>	—	15 cm (fox body)

Thermal Imaging Riflescopes  
**THERMION XG**

**SCALABLE**

# M56Fi

Reticle parameters (apply to all magnifications)



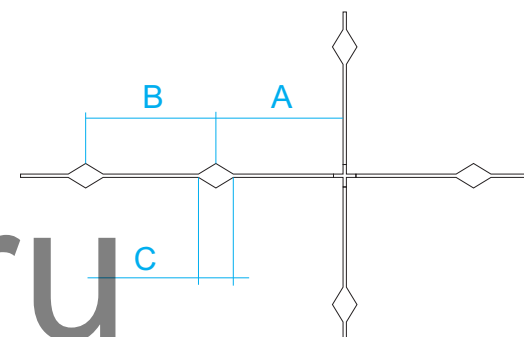
	MOA	cm @ 100 m
<b>Section A</b>	3.5	10 (1 mil)
<b>Section B</b>	3.5	10 (1 mil)
<b>Section C</b>	0.86	2.5 (0.25 mil)

Thermal Imaging Riflescopes  
**THERMION XG**

**SCALABLE**

# M57Fi

Reticle parameters (apply to all magnifications)



	MOA	cm @ 100 m
<b>Section A</b>	3.5	10 (1 mil)
<b>Section B</b>	3.5	10 (1 mil)
<b>Section C</b>	0.86	2.5 (0.25 mil)

Thermal Imaging Riflescopes  
**THERMION XG**

