

Reticle  
Catalogue

Thermal Imaging Riflescopes

**TRAIL 2 LRF**

## Non-scalable reticles

The values of the non-scalable reticles are correct in the following cases:

- when the magnification of the scope is set to minimum
- when "picture in picture" is activated

[www.tulon.ru](http://www.tulon.ru)

## Scalable reticles

Reticle parameters apply to all magnifications

**D50i**

**C50i**

**X54i**

**H50i**

**X50i**

**T54i**

**M58i**

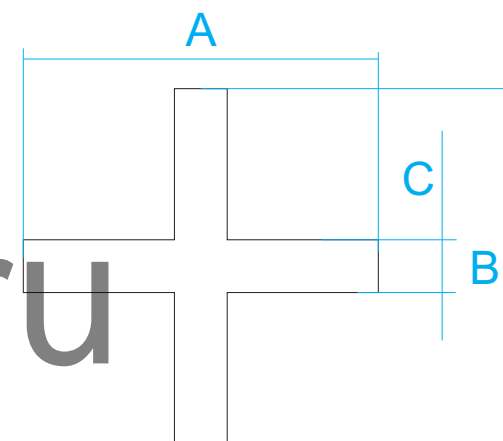
**X51Fi-300**

**M56Fi (Mil-Dot)**

**M57Fi (Mil-Dot)**

# D50i

Reticle parameters (for minimum magnification)

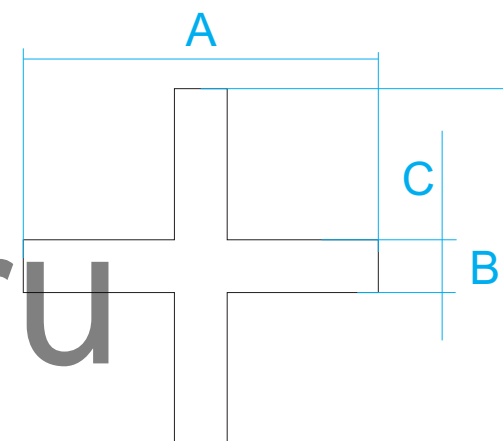


Thermal Imaging Riflescopes  
**TRAIL 2 LRF**

Model	MOA		cm @ 100 m	
	XQ38	XQ50	XQ38	XQ50
Section A	4.0	3.1	11.7	8.9
Section B	4.0	3.1	11.7	8.9
Section C	0.6	0.4	1.7	1.3

# C50i

Reticle parameters (for minimum magnification)



www.tulon.ru

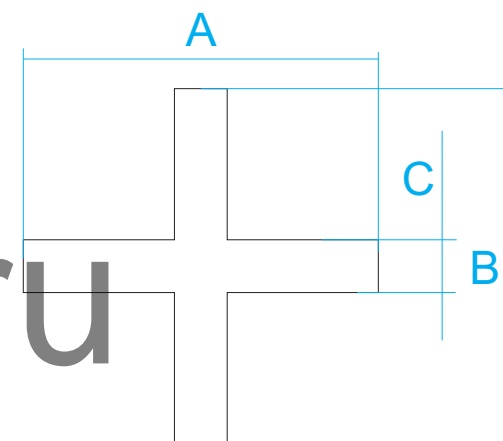
Thermal Imaging Riflescopes  
**TRAIL 2 LRF**

Model	MOA		cm @ 100 m	
	XQ38	XQ50	XQ38	XQ50
Section A	4.0	3.1	11.7	8.9
Section B	4.0	3.1	11.7	8.9
Section C	0.6	0.4	1.7	1.3
Section D	34.4	34.4	100	100



# X54i

Reticle parameters (for minimum magnification)



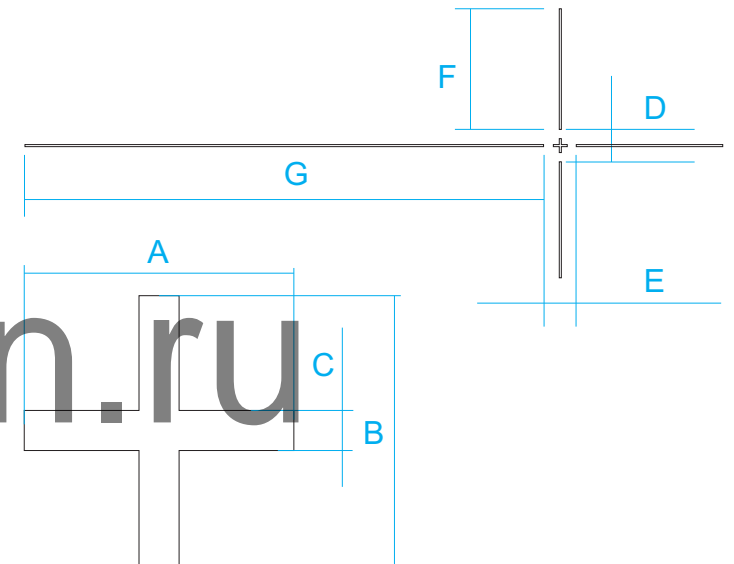
Thermal Imaging Riflescopes  
**TRAIL 2 LRF**

Model	MOA		cm @ 100 m	
	XQ38	XQ50	XQ38	XQ50
Section A	4.0	3.1	11.7	8.9
Section B	4.0	3.1	11.7	8.9
Section C	0.6	0.4	1.7	1.3
Section D	34.4	34.4	100	100

# H50i



Reticle parameters (for minimum magnification)



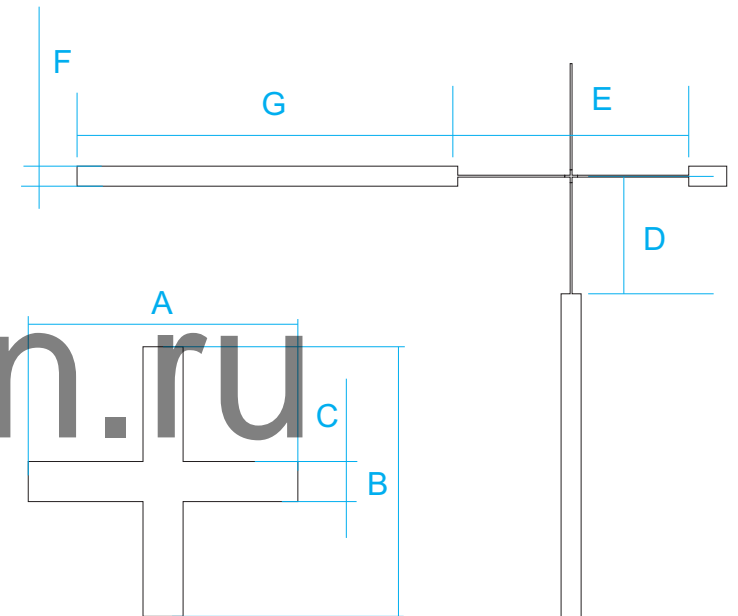
Model	MOA		cm @ 100 m	
	XQ38	XQ50	XQ38	XQ50
Section A	4.0	3.1	11.7	8.9
Section B	4.0	3.1	11.7	8.9
Section C	0.6	0.4	1.7	1.3
Section D	10	10	29	29
Section E	10	10	29	29
Section F	53	39.1	154	114
Section G	176.4	132.9	513	387

Thermal Imaging Riflescopes  
**TRAIL 2 LRF**

# X50i



Reticle parameters (for minimum magnification)

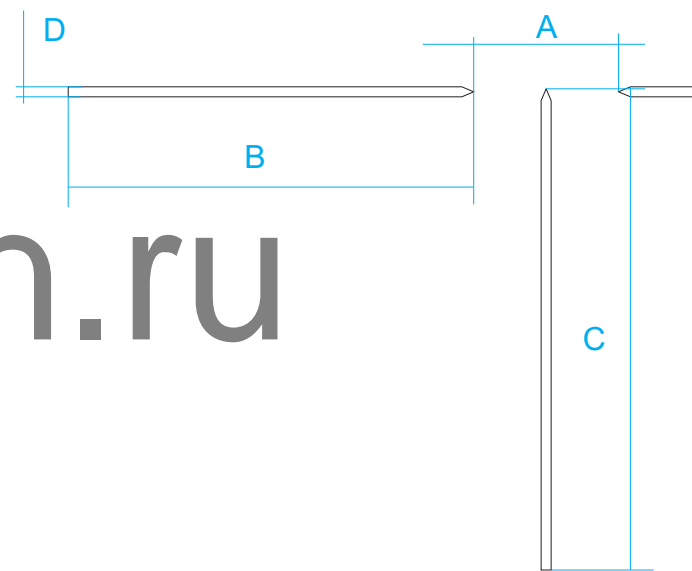


Thermal Imaging Riflescopes  
**TRAIL 2 LRF**

Model	MOA		cm @ 100 m	
	XQ38	XQ50	XQ38	XQ50
Section A	4.0	3.1	11.7	8.9
Section B	4.0	3.1	11.7	8.9
Section C	0.6	0.4	1.7	1.3
Section D	34.4	34.4	100	100
Section E	68.8	68.8	200	200
Section F	1.8	1.2	5.1	3.5
Section G	164	121	478	351

# T54i

Reticle parameters (for minimum magnification)

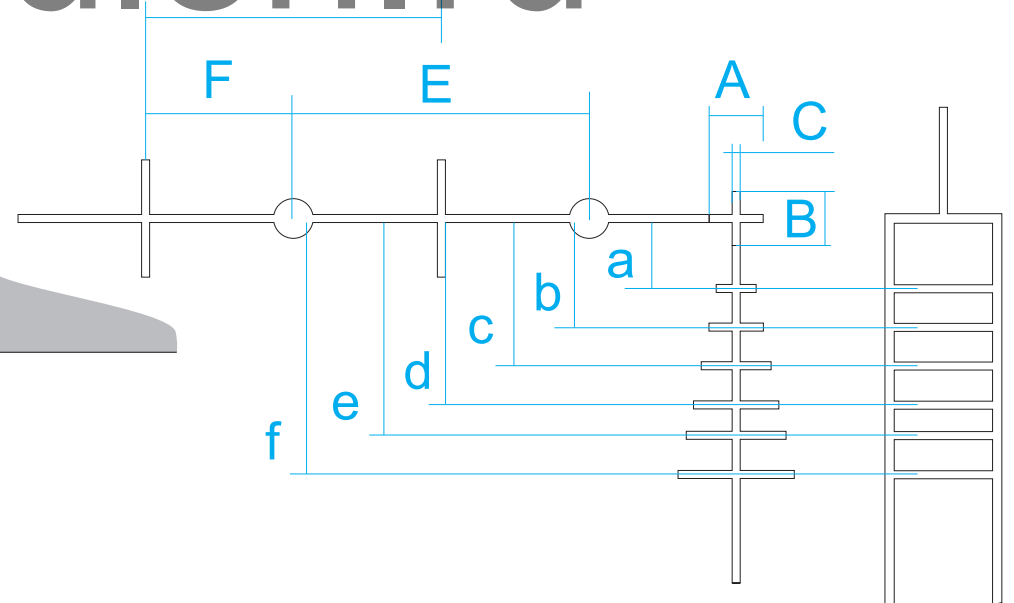


Thermal Imaging Riflescopes  
**TRAIL 2 LRF**

Model	MOA		cm @ 100 m	
	XQ38	XQ50	XQ38	XQ50
Section A	34.4	34.4	100	100
Section B	164	121	478	351
Section C	183	139	534	406
Section D	4.0	3.1	11.7	8.9



[www.tulon.ru](http://www.tulon.ru)



Thermal Imaging Riflescopes  
**TRAIL 2 LRF**

### TRAIL 2 LRF XQ38

	MOA	cm @ 100 m
<b>Section A</b>	4	11.8 On minimal magnification
<b>Section B</b>	4	11.8 On minimal magnification
<b>Section C</b>	0.6	1.7 On minimal magnification
<b>Section D</b>	3.5	10 (1 mil) On 10x magnification
<b>Section E</b>	3.5	10 (1 mil) On 10x magnification
<b>Section F</b>	3.5	10 (1 mil) On 5x magnification

<b>Section a</b>	1 mil (10 cm @ 100 m) on 2.5x magnification
<b>Section b</b>	1 mil (10 cm @ 100 m) on 4x magnification
<b>Section c</b>	1 mil (10 cm @ 100 m) on 5x magnification
<b>Section d</b>	1 mil (10 cm @ 100 m) on 7.5x magnification
<b>Section e</b>	1 mil (10 cm @ 100 m) on 10x magnification

### TRAIL 2 LRF XQ50

	MOA	cm @ 100 m
<b>Section A</b>	3.1	8.9 On minimal magnification
<b>Section B</b>	3.1	8.9 On minimal magnification
<b>Section C</b>	0.4	1.3 On minimal magnification
<b>Section D</b>	3.5	10 (1 mil) On 14x magnification
<b>Section E</b>	3.5	10 (1 mil) On 14x magnification
<b>Section F</b>	3.5	10 (1 mil) On 7x magnification

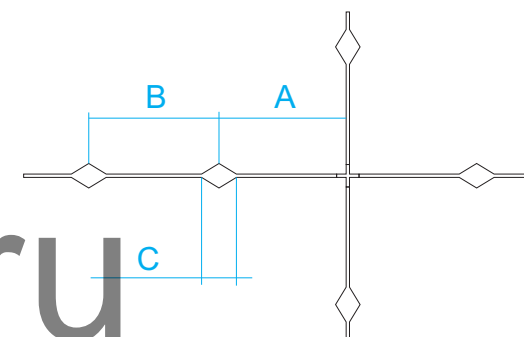
<b>Section a</b>	1 mil (10 cm @ 100 m) on 3.5x magnification
<b>Section b</b>	1 mil (10 cm @ 100 m) on 5x magnification
<b>Section c</b>	1 mil (10 cm @ 100 m) on 7x magnification
<b>Section d</b>	1 mil (10 cm @ 100 m) on 10x magnification
<b>Section e</b>	1 mil (10 cm @ 100 m) on 14x magnification

www.tulon.ru

**SCALABLE**

# M56Fi

Reticle parameters (apply to all magnifications)



www.tulon.ru

	MOA	cm @ 100 m
<b>Section A</b>	3.5	10 (1 mil)
<b>Section B</b>	3.5	10 (1 mil)
<b>Section C</b>	0.86	2.5 (0.25 mil)

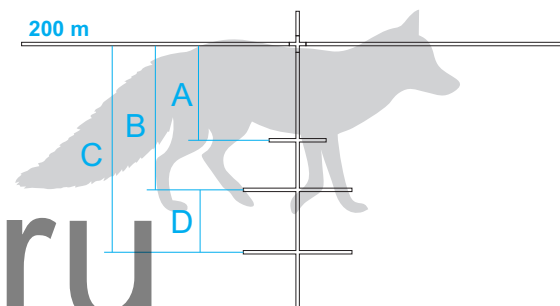
Thermal Imaging Riflescopes  
**TRAIL 2 LRF**



**SCALABLE**

# X51Fi-300

Reticle parameters (apply to all magnifications)



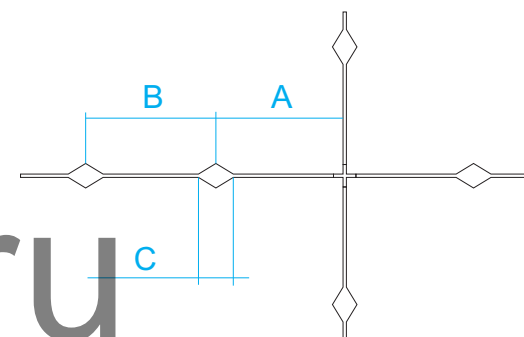
	200 m	300 m
<b>Section A</b>	15 cm (fox body)	23 cm (roe deer body)
<b>Section B</b>	23 cm (roe deer body)	35 cm (wild boar body)
<b>Section C</b>	35 cm (wild boar body)	50 cm (deer body)
<b>Section D</b>	—	15 cm (fox body)

Thermal Imaging Riflescopes  
**TRAIL 2 LRF**

**SCALABLE**

# M57Fi

Reticle parameters (apply to all magnifications)



	MOA	cm @ 100 m
<b>Section A</b>	3.5	10 (1 mil)
<b>Section B</b>	3.5	10 (1 mil)
<b>Section C</b>	0.86	2.5 (0.25 mil)

Thermal Imaging Riflescopes  
**TRAIL 2 LRF**

